

**VelyenPremium**  
**4EE0300**



**Double Scissor 3500 Kg**  
**Low Profile: 110 mm · Automatic bleeding**

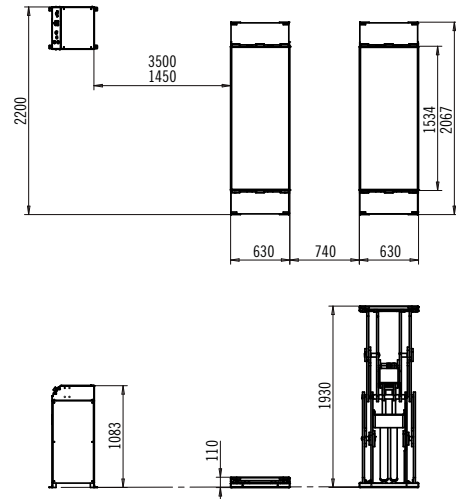


Visit us in [www.velyen.com](http://www.velyen.com)

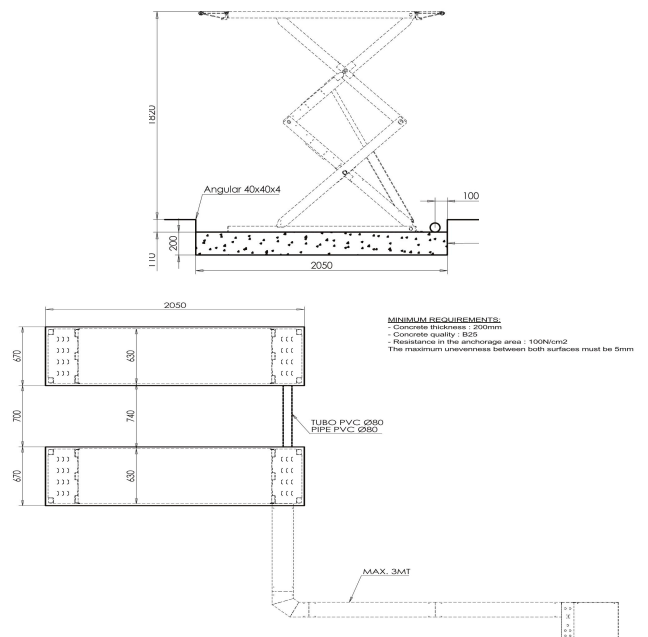
## General Features:

- Product homologated and certified according to the new European Machinery Directive 2006/42/CE and Harmonized Norm EN 1493:2010.
- Strong structure of 4 cylinders to ensure two independent oil circuits: hydraulic safety.
- Low profile platforms are suitable for special or tuned vehicles.
- Suitable for surface or in-ground installation.
- The automatic bleeding of hydraulic circuits can be done easily by the operator without any type of technical assistance.
- Equipped with safety valve against over-pressure.
- Hydraulic system with safety device against unexpected uneven of platforms.
- Automatic safety stop at 300 mm from the floor and throughout the whole descent the lift will beep warning.
- High quality sliders guarantee a soft and stable lifting and lowering movement.
- Free maintenance self-lubricating bushings.
- Pushbuttons at 24V, type “dead man”.
- Separated UP & DOWN pushbuttons and general switch lockable with padlock.
- Insolated ON/OFF switch.
- Safety system against obstacles on the lowering.

### SURFACE LIFT

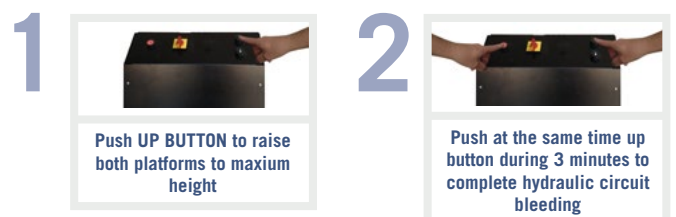


### IN-GROUND LIFT

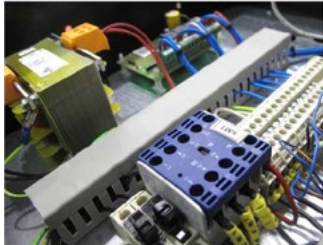


TECHNICAL DATA	
Load Capacity	3500 Kg.
Platforms Length	1534-2067 mm
Platforms Width	630 mm
Drive on height	110 mm
Maximum Lifting Height	1930 mm
Distance between platforms	720 mm
Overall Width	2000 mm
Motor	3 Phase 230/400 V 50/60 Hz. 2.2 KW

### Make an automatic bleeding in 2 steps with no effort



## CUSTOM DESING AND MANUFACTURE BY VELYEN



► **ELECTRIC**

Electrical components CE of the leading brands.



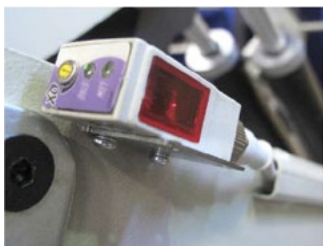
► **ELECTRIC**

Optimized motor for high 120 performance with low 80 power consumption.



► **ELECTRIC**

Non-contact proximity inductive limit switches.



► **ELECTRICAL SAFETY**

Adjustable photocell maximum safety 100 mm



► **HYDRAULIC**

Automatic bleeding can be done easily by the end user without technical assistance.



► **HYDRAULIC**

4 Cylinders hard pressed chrome of high quality, anti-corrosion designed and functionality tested.



► **HYDRAULIC**

High pressure flexible hoses of double pressed mesh of high quality and fully tested.



► **HYDRAULIC**

Hydraulic group of high performance (300bar) and long-life.



► **HYDRAULIC**

Hydraulic O'rings Premium maximum sealing and minimal wear.



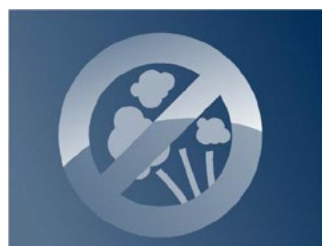
► **HYDRAULIC**

Integrated control box pre-installed.



► **DESIGN**

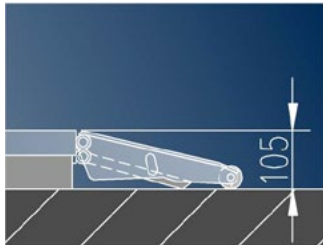
Self-lubricating bushings.



► **DESIGN**

No need compressed air supply.

## CUSTOM DESIGN AND MANUFACTURE BY VELYEN



► **DESIGN**

Minimum height design.



► **OPTIONALS / DESIGN**

Surface or in-ground installation.



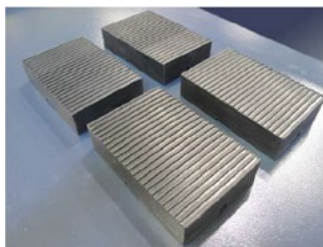
► **DESIGN**

Reinforced folding ramps, act as platform length extensions.



► **DESIGN / SAFETY**

Adjustable photocell maximum safety 100 mm



► **ACCESORIES**

Automatic bleeding can be done easily by the end user without technical assistance.



► **SAFETY**

4 Cylinders hard pressed chrome of high quality, anti-corrosion designed and functionality tested.



► **SAFETY**

Dynamic load test with 115% of the maximum load rate according to UNE 1493. Complete check of principal safety devices of the lift before delivery from factory



► **SAFETY**

Acoustic signal against toe-trapping.



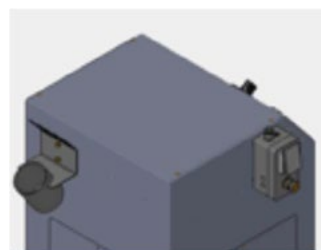
► **OPTIONALS**

Optional 4x4



► **OPTIONALS**

Color customization.



► **OPTIONALS**

Tools support Air & Energy supply.



► **OPTIONALS / ELECTRIC**

Single phase version available.